

PRINTER (G106/G382) POINT TO POINT DIAGRAM

(G106/G382) ELECTRICAL COMPONENT LAYOUT

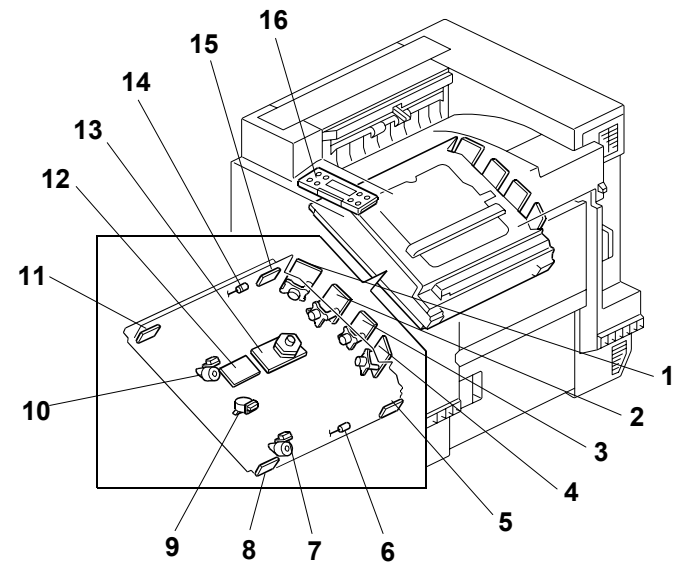


Fig. 1

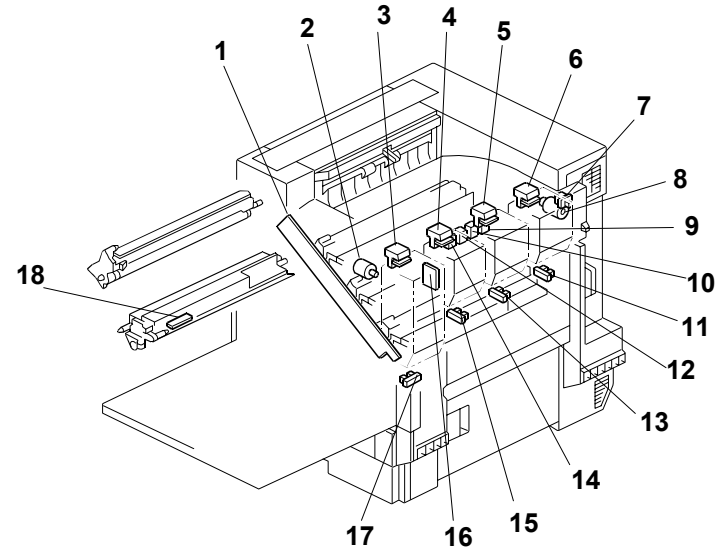


Fig. 2

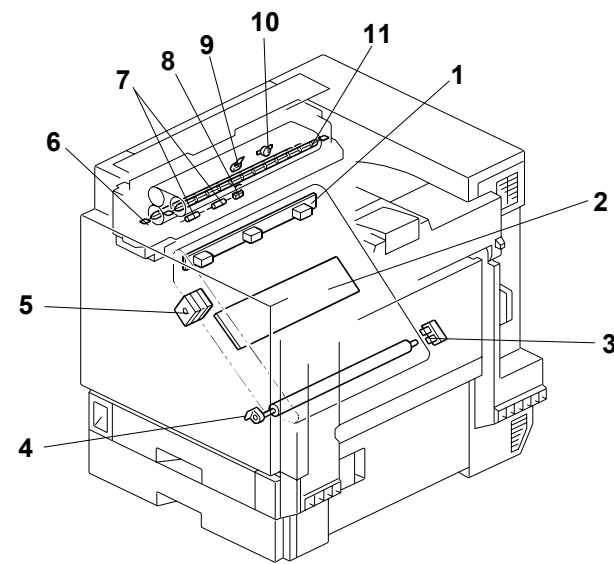


Fig. 3

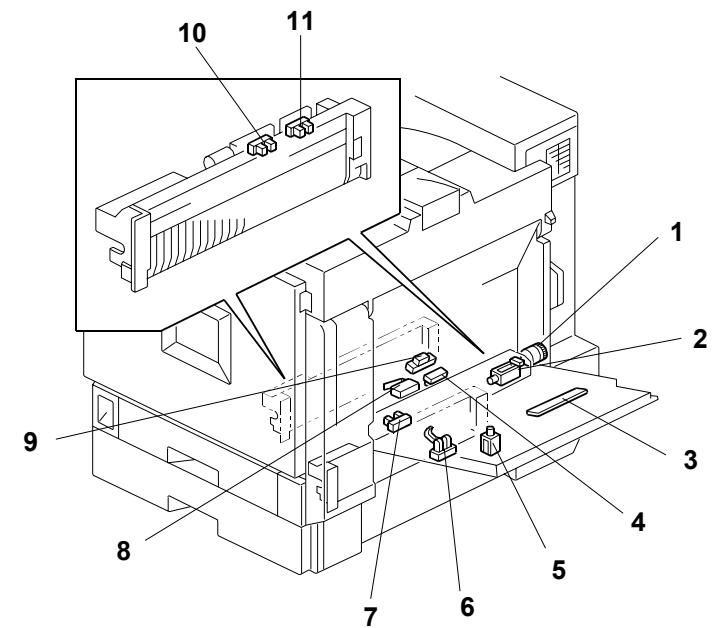


Fig. 4

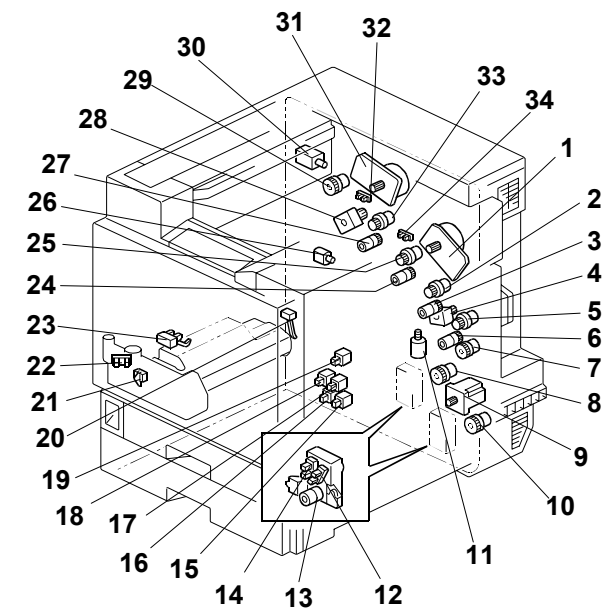


Fig. 5

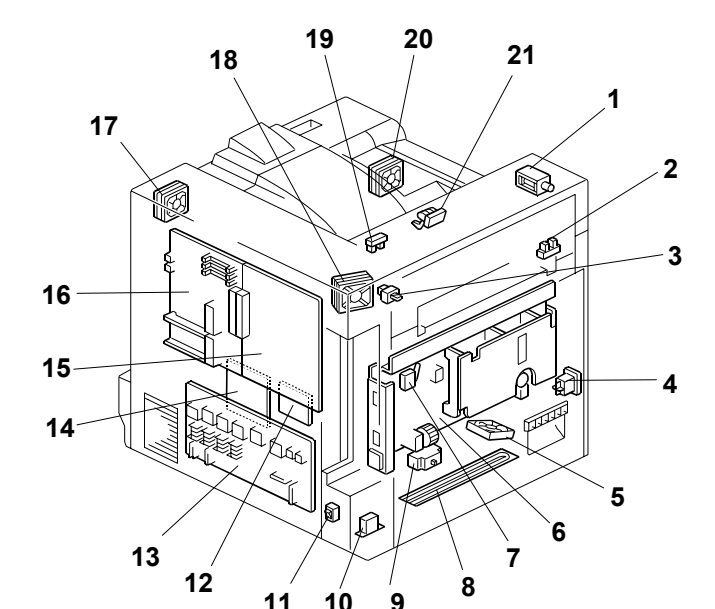


Fig. 6

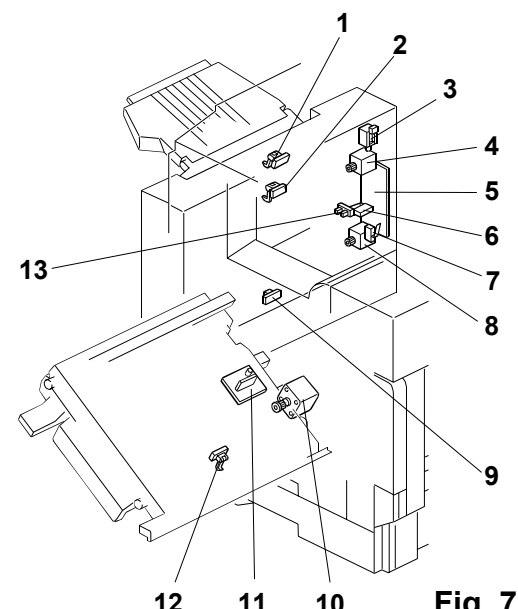
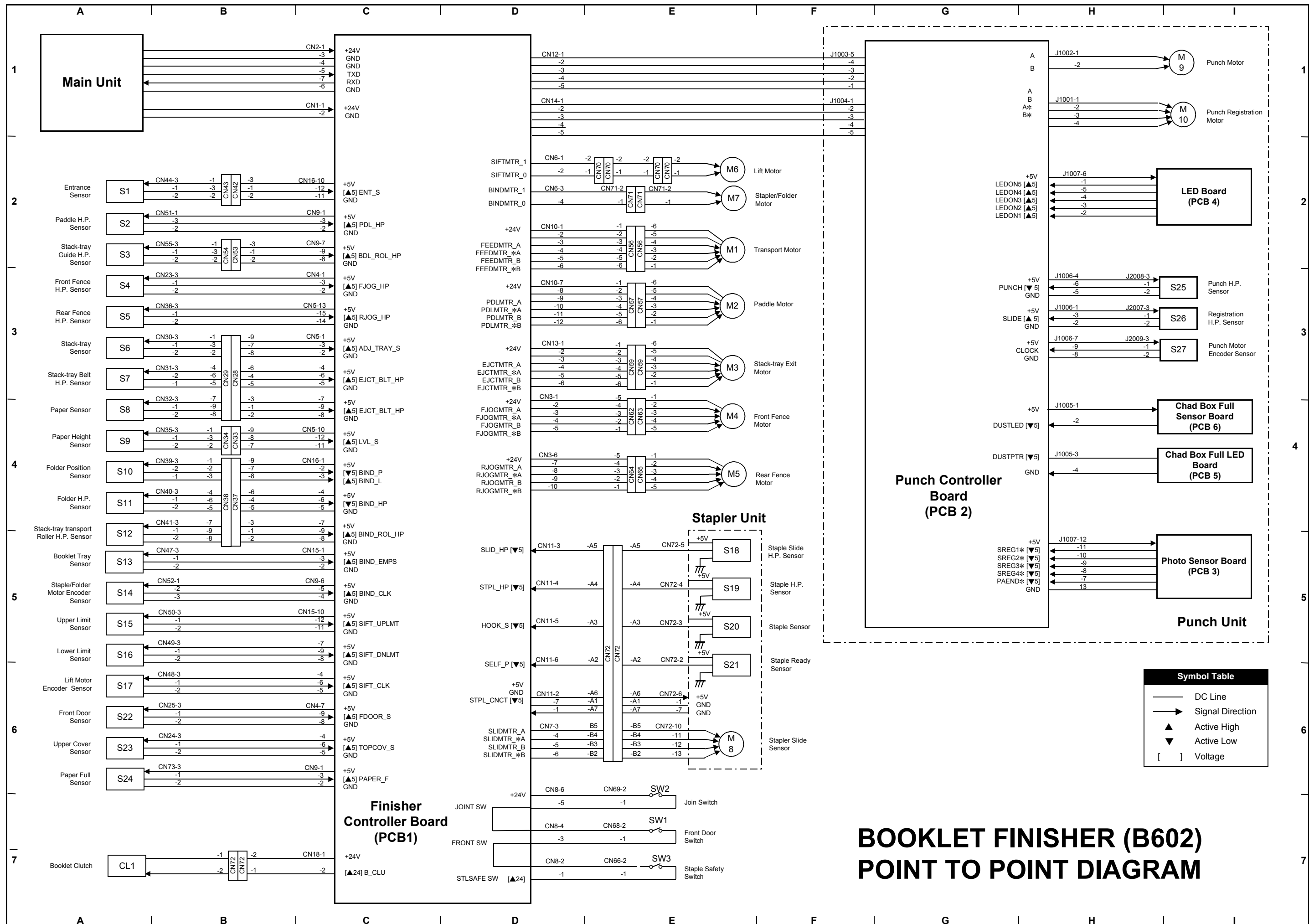


Fig. 7

Symbol	Description	Index No.	P-to-P
Printed Circuit Boards			
PCB1	LD Unit-Y	1-1	G16
PCB2	LD Unit-K	1-2	G15
PCB3	LD Unit-M	1-3	G14
PCB4	LD Unit-C	1-4	G14
PCB5	Laser Synchronizing Detector Board-MC - S	1-5	E14
PCB6	Laser Synchronizing Detector Board-MC - E	1-8	E14
PCB7	Laser Synchronizing Detector Board-YK - S	1-11	E16
PCB8	Laser Synchronizing Detector Board-YK - E	1-15	E15
PCB9	Memory Chip - K	2-3	J7
PCB10	Memory Chip - Y	2-4	H11
PCB11	Memory Chip - C	2-5	H11
PCB12	Memory Chip - M	2-6	H10
PCB13	High Voltage Supply Board - Transfer	3-2	F8
PCB14	Paper Width Detection Board	4-3	J6
PCB15	PSU (Power Supply Unit)	6-6	B6
PCB16	DRB	6-12	G5
PCB17	High Voltage Supply Board - C, B	6-13	G9
PCB18	BCU	6-15	I9
PCB19	Operation Panel	1-16	J13
PCB20	SUB PSU	6-14	A3
PCB21	Duplex Control Board	7-5	C10
PCB22	Duplex Drive Board	7-11	B10
PCB23	Transfer Rotation Encoder	3-4	F7
PCB24	Polygon Mirror Motor Drive Board	1-12	F12
Motors			
M1	Black PCU Cooling Fan Motor	6-20	G7
M2	3rd Mirror Positioning Motor-M	1-7	G12
M3	3rd Mirror Positioning Motor-C	1-9	G12
M4	3rd Mirror Positioning Motor-Y	1-10	G12
M5	Polygon Motor	1-13	E12
M6	Air Pump - CK	2-2	J8
M7	Air Pump - MY	2-7	J8
M8	Transfer Unit Drive Motor	3-5	F7
M9	Development Drive Motor-CMY	5-1	G6
M10	Drum Drive Motor-CMY	5-4	H6
M11	Paper Feed Motor	5-9	H5
M12	Transfer Belt Contact Motor	5-11	J8
M13,14	Tray Lift Motor	5-13	J12
M15	Drum Drive Motor-K	5-28	H5
M16	Development Drive Motor-K	5-31	F6
M17	PSU Cooling Fan Motor	6-5	E2
M18	Laser Optics Housing Cooling Fan Motor	6-17	J9
M19	Fusing Fan Motor	6-18	E2
M20	Waste Toner Vibration Motor	5-26	J4
M21	Duplex Feed Motor	7-10	A11
M22	Duplex Inverter Motor 1	7-4	D10
M23	Duplex Inverter Motor 2	7-8	D9
Clutches			
CL1	By-pass Feed Clutch	4-1	J6
CL2	Development Clutch-C	5-2	J3
CL3	Toner Supply Clutch-C	5-3	J5
CL4	Development Clutch-M	5-5	J7
CL5	Toner Supply Clutch-M	5-6	J7
CL6	Registration Clutch	5-7	J10
CL7	Tray 1 Paper Feed Clutch	5-8	J10
CL8	Tray 2 Paper Feed Clutch	5-10	J10
CL9	Toner Supply Clutch-Y	5-24	J5
CL10	Development Clutch-Y	5-25	J3
CL11	Toner Supply Clutch-K	5-27	J5
CL12	Fusing Clutch	5-29	F2
CL13	Development Clutch-K	5-33	J3

Symbol	Description	Index No.	P-to-P
Sensors			
S1	Paper Overflow Sensor	6-21	D2
S2	Toner End Sensor - M	2-11	J11
S3	Toner End Sensor - C	2-13	J11
S4	Toner End Sensor - Y	2-15	J11
S5	Humidity Sensor	2-16	J16
S6	Toner End Sensor - K	2-17	J6
S7	TD Sensor - M	2-18	J7
S8	TD Sensor - C	2-18	J5
S9	TD Sensor - Y	2-18	J4
S10	TD Sensor - K	2-18	J4
S11	ID Sensor	3-1	G8
S12	Transfer Belt Sensor	3-3	J5
S13	Relay Sensor	4-4	J15
S14	Vertical Transport Sensor	4-6	J10
S15	By-pass Paper End Sensor	4-7	J6
S16	Registration Sensor	4-9	J7
S17,18	Paper End Sensor	4-10	J15, J16
S19,20	Paper Lift Sensor	4-11	J15, J16
S21	Tray 1 Paper Height Sensor 2	5-12	J12
S22	Tray 2 Paper Height Sensor 2	5-12	J9
S23	Tray 1 Paper Height Sensor 1	5-14	J11
S24	Tray 2 Paper Height Sensor 1	5-14	J12
S25	Waste Oil Bottle Set Sensor	5-21	E2
S26	Waste Oil Sensor	5-22	E2
S27	Waste Toner Sensor	5-23	J3
S28	Drum Gear Position Sensor - K	5-32	J3
S29	Drum Gear Position Sensor - CMY	5-34	J5
S30	Fusing Exit Sensor	6-2	D2
S31	Paper Exit Sensor	6-19	E2
S32	Duplex Exit Sensor	7-1	D11
S33	Duplex Exit Sensor 2	7-2	D11
S34	Duplex Exit Sensor 3	7-13	D11
S35	Duplex Inverter Sensor	7-9	D11
S36	Duplex Feed Sensor	7-12	B11
Switches			
SW1	Right Door Switch	2-7	J15
SW2	Vertical Transport Switch	4-8	E6
SW3	Tray 2 Paper Size Switch - 4	5-15	J11
SW4	Tray 2 Paper Size Switch - 2	5-16	J11
SW5	Tray 2 Paper Size Switch - 3	5-17	J11
SW6	Tray 2 Paper Size Switch - 1	5-18	J11
SW7	Tray 1 Set Switch	5-19	J15
SW8	Waste Toner Bottle Set Switch	5-20	J3
SW9	Left Door Switch	6-3	D2
SW10	Main Switch	6-4	D6
SW11	Front Door and Left Door Switch	6-7	A7
SW12	Anti-condensation Heater Switch (Option)	6-11	E6
SW13	Duplex Door Switch	7-6	D10
SW14	Duplex Inverter Unit Switch	7-7	D10
SW15	PCU/Development Unit Set Switch	2-1	K8

Symbol	Description	Index No.	P-to-P
Solenoids			
SOL1	Air Flow Valve Solenoid - M	2-9	J9
SOL2	Air Flow Valve Solenoid - C	2-10	J9
SOL3	Air Flow Valve Solenoid - Y	2-12	J9
SOL4	Air Flow Valve Solenoid - K	2-14	J10
SOL5	By-pass Pick-up Solenoid	4-2	J6
SOL6	Grip Roller Release Solenoid	4-5	J10
SOL7	Exit Junction Gate Solenoid	5-30	F2
SOL8	Oil Supply Unit Solenoid	6-1	F2
SOL9	Duplex Junction Gate Solenoid	7-3	D10
Lamps			
L1	Pressure Roller Fusing Lamp	3-6	B2
L2	Heating Roller Fusing Lamp	3-11	B2
Thermistors			
TH1	Thermistor 2	1-6	G13
TH2	Thermistor 1	1-14	G13
TH3	Pressure Roller Thermistor	3-8	C1
TH4	Heating Roller Thermistor	3-9	C1
Thermofuse/Stat			
THO1	Pressure Roller Thermofuse	3-7	B2
THO2	Heating Roller Thermostat	3-10	B2
Others			
CB1	Earth Leakage Circuit Breaker	6-9	A8
CC1	Choke Coil	6-10	A8
H1	Anti-condensation Heater - Tray (Option)	6-8	D6



BOOKLET FINISHER (B602) POINT TO POINT DIAGRAM

Symbol Table	
—	DC Line
→	Signal Direction
▲	Active High
▼	Active Low
[]	Voltage

BOOKLET FINISHER (B602) ELECTRICAL COMPONENT LAYOUT

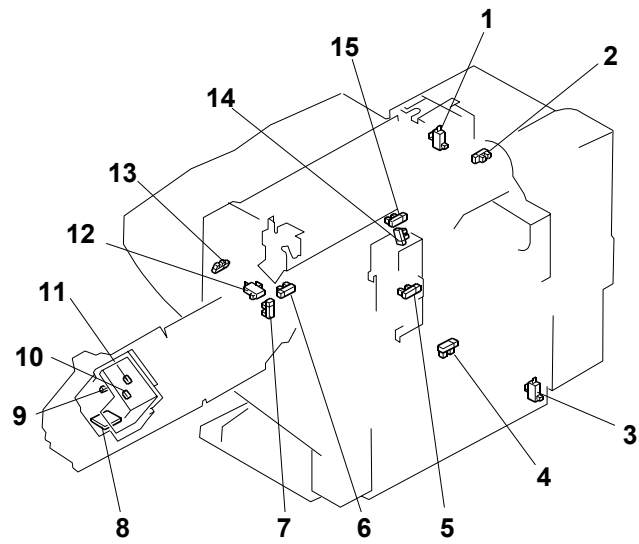


Fig. 1

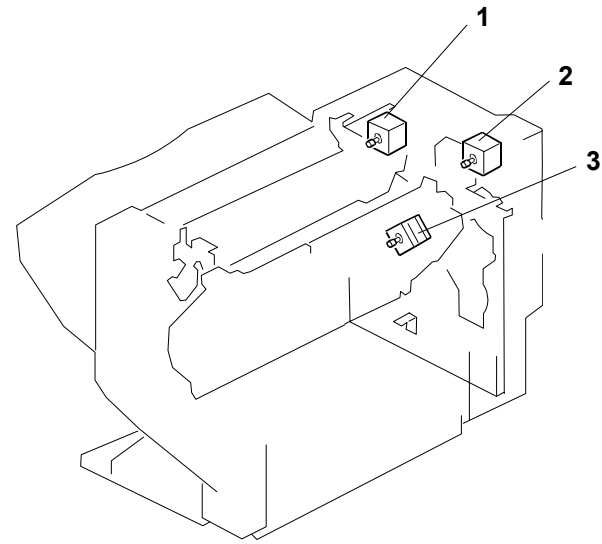


Fig. 3

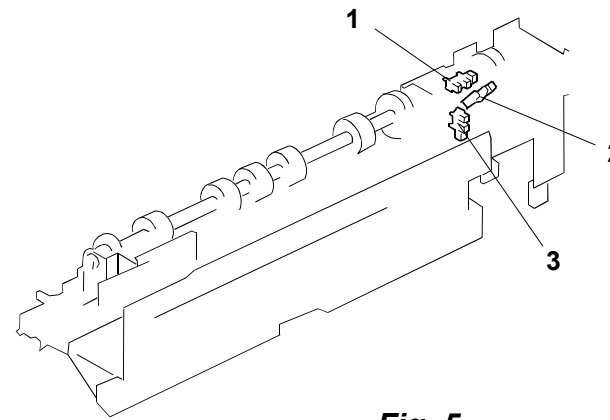


Fig. 5

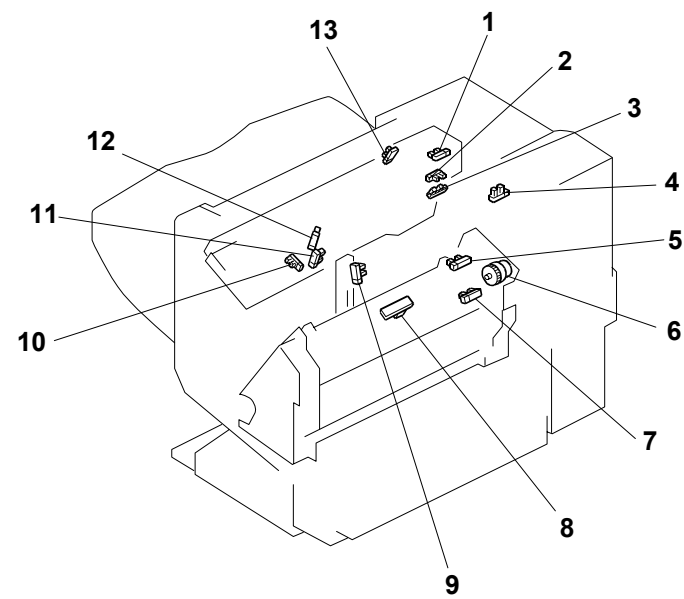


Fig. 2

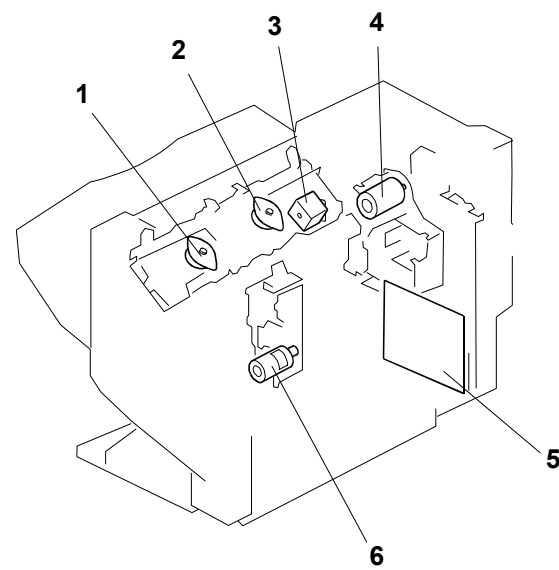


Fig. 4

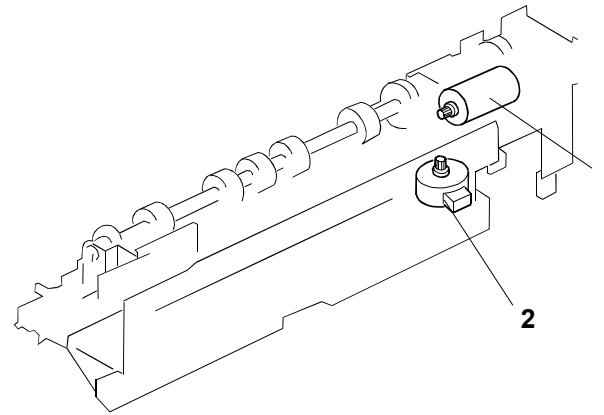


Fig. 6

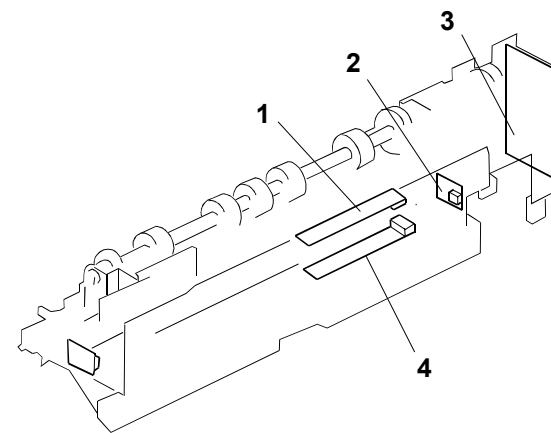


Fig. 7

Symbol	Description	Index No.	P-to-P
Printed Circuit Boards			
PCB1	Finisher Controller Board	4-5	C7
PCB2	Punch Controller Board	7-3	G4
PCB3	Photo Sensor Board	7-1	I5
PCB4	LED Board	7-4	I2
PCB5	Punch Box Full LED Board	7-5	I4
PCB6	Punch Box Full Sensor Board	7-2	I4
Motors			
M1	Transport Motor	3-2	E2
M2	Paddle Motor	3-1	E3
M3	Stack-tray Exit Motor	4-3	E3
M4	Front Fence Motor	4-1	E4
M5	Rear Fence Motor	4-2	E4
M6	Lift Motor	4-6	E2
M7	Staple/Folder Motor	4-4	E2
M8	Staple Slide Motor	3-3	E6
M9	Punch Motor	6-1	I1
M10	Punch Registration Motor	6-2	I1
Sensors			
S1	Entrance Sensor	2-4	A2
S2	Paddle H.P. Sensor	2-3	A2
S3	Stack-tray Guide H.P. Sensor	2-2	A2
S4	Front Fence H.P. Sensor	1-13	A3
S5	Rear Fence H.P. Sensor	2-13	A3
S6	Stack-tray Sensor	2-11	A3
S7	Stack-tray Belt H.P. Sensor	2-12	A3
S8	Paper Sensor	2-10	A4
S9	Paper Height Sensor	2-9	A4
S10	Folder Position Sensor	2-8	A4
S11	Folder H.P. Sensor	2-7	A4
S12	Stack-tray Transport Roller H.P. Sensor	2-5	A5
S13	Booklet Tray Sensor	1-4	A5
S14	Staple/Folder Motor Encoder Sensor	1-2	A5
S15	Upper Limit Sensor	2-1	A5
S16	Lower Limit Sensor	1-15	A5
S17	Lift Motor Encoder Sensor	1-5	A6
S18	Staple Slide H.P. Sensor	1-8	E5
S19	Staple H.P. Sensor	1-11	E5
S20	Staple Sensor	1-10	E5
S21	Staple Ready Sensor	1-9	E6
S22	Front Door Sensor	1-7	A6
S23	Upper Cover Sensor	1-6	A6
S24	Paper Full Sensor	1-14	A6
S25	Punch H.P. Sensor	5-2	I3
S26	Registration H.P. Sensor	5-3	I3
S27	Punch Motor Encoder Sensor	5-1	I3
Switches			
SW1	Front Door Switch	1-12	E7
SW2	Joint Switch	1-3	E7
SW3	Staple Safety Switch	1-1	E7
Clutches			
CL1	Booklet Clutch	2-6	A7